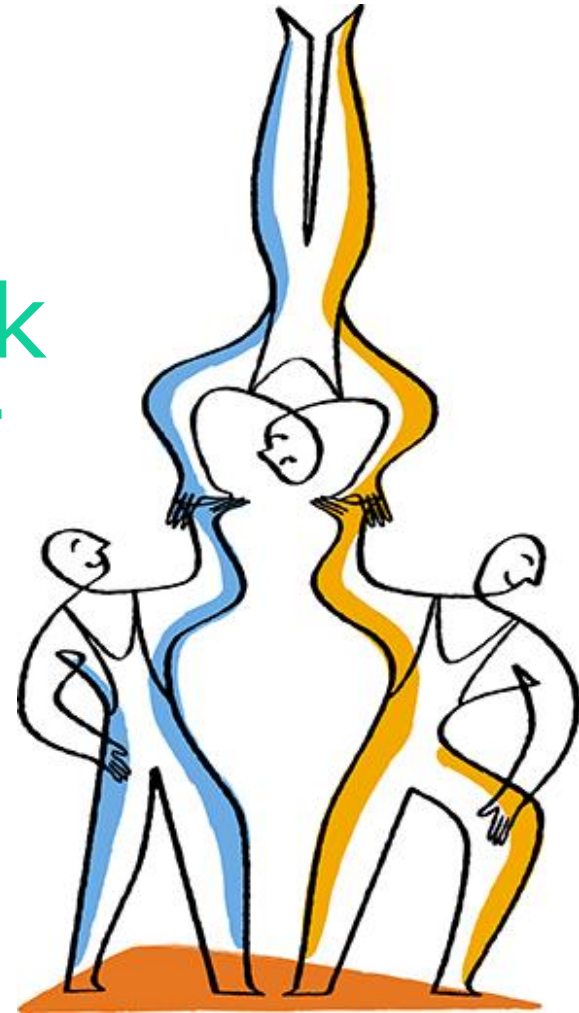




# Benchmarking Work Group (BWG) under OpenSFS

Richard Vanderbilt - Netapp  
Co-chair BWG  
May 9, 2012





NetApp®

# Benchmarking Work Group

## Mission Statement

The OpenSFS Benchmarking Work Group (BWG) aims to define an I/O benchmark suite that satisfies the benchmarking requirements of scalable parallel file system community. The workgroup will characterize the I/O workloads and will then collect and build the required I/O benchmarks that best emulate these workloads.

## Members Community

Sarp Oral Oak Ridge National Labs (ORNL) Co-Chair [oralhs@ornl.gov](mailto:oralhs@ornl.gov)

Richard Vanderbilt Netapp Co-Chair [richard.vanderbilt@netapp.com](mailto:richard.vanderbilt@netapp.com)

- 86 Members and growing
  - 14 Storage companies
  - 11 Universities
  - 5 Government Labs
  - 4 Lustre Organizations, & Independent Industry Organizations
- 37 Attendees at BWG workshop LUG 2012

Openbenchmark mailing list

[Openbenchmark@lists.opensfs.org](mailto:Openbenchmark@lists.opensfs.org)

<http://lists.opensfs.org/listinfo.cgi/openbenchmark-opensfs.org>

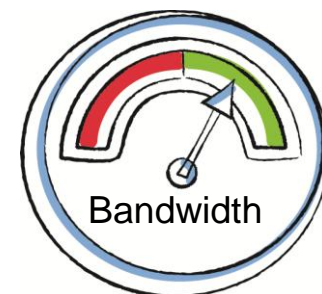
\* Business Case rating 1-5 ( 5 being highest)



# Benchmarking Work Group Phases

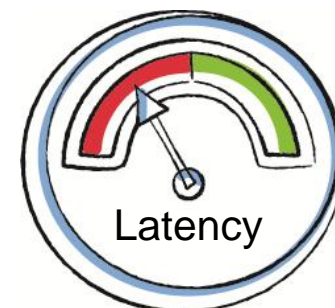
## Phase 1 Data Collection

- Produce a survey/questionnaire
- Create a standard dictionary of terms



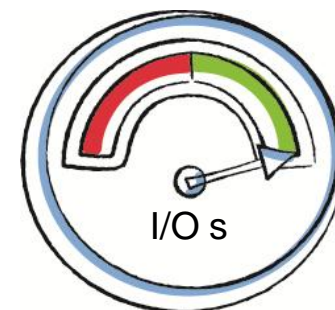
## Phase 2 Data Analysis

- Data Collection and Analysis
  - [Bgw-survey-data@opensfs.org](mailto:Bgw-survey-data@opensfs.org)
  - <http://wiki.opensfs.org/wiki/OBWG>
- Characterize the workloads into market segments
- Use OpenSFS as a repository for data collected



## Phase 3 Benchmark Recommendations

- Recommend I/O generation tools specific to those workloads
- Develop procedures and usage guidelines for each tool
- Develop a Bibliography of published works



\* Business Case rating 1-5 ( 5 being highest)



NetApp®

# Call To Action

## Survey Participants Wanted

**The BWG will be producing a survey for the HPFS community with a focus on Lustre. The Survey will be distributed through the OpenSFS reflectors and discussion groups.**

- The Survey data can be anonymous
- All fields are voluntary, contribute what data you can
- If you have questions, the BWG can assist in helping you through the process

## The Benefit to You

- The BWG will send you a list of I/O generation tools that best match your I/O workloads
- Match your workloads with other members in the community (optional)
- Provide an open and standard method for testing your workloads to make more informed business decisions

\* Business Case rating 1-5 ( 5 being highest)



**NetApp®**

**Thank You**

\* Business Case rating 1-5 ( 5 being highest)